

TE-28C-PC8

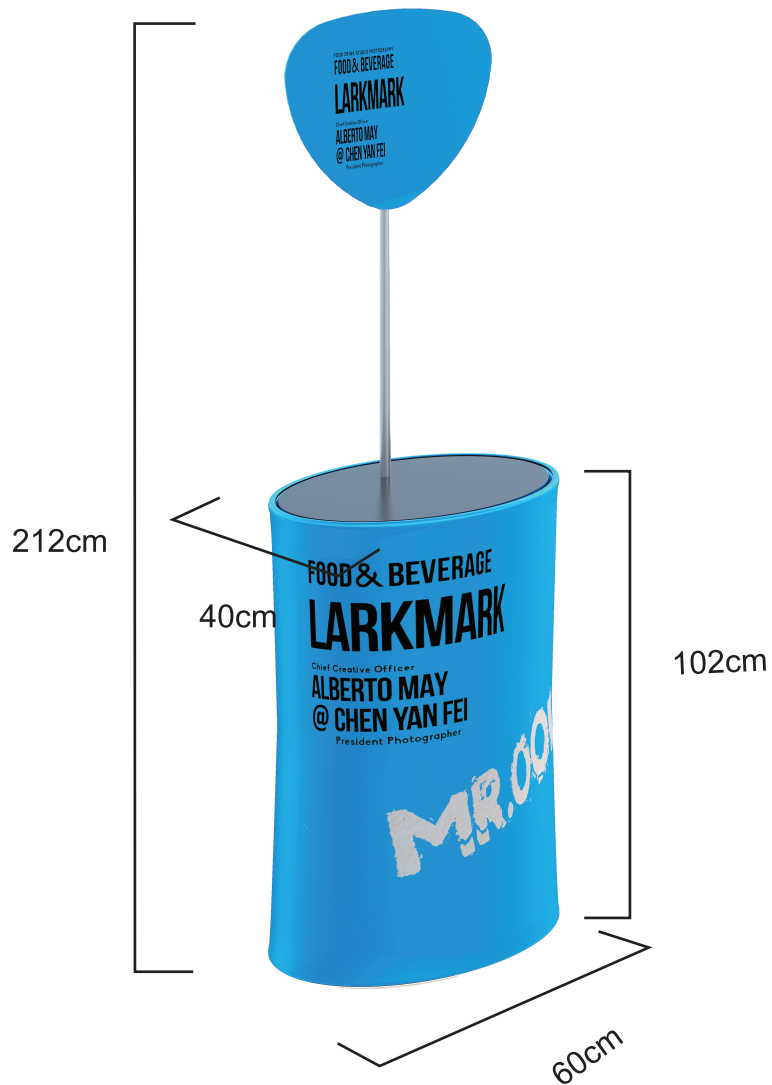
File:

Please provide final artworks in either Illustrator, Photoshop or CorelDraw file formats
Files must be set up in CMYK color mode.
All artworks must come with a digital proof saved in jpg format
Should you have specific color requirements, please provide PANTONE No. or print sample.

File setup:

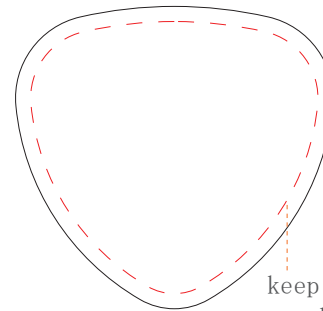
Vector files: 1:1 or proportional to actual size
All fonts must be outlined or converted to curves.
Any image placed in layout should be in CMYK mode, in at least 100dpi resolution and must also be supplied separately.

PRODUCT INFORMATION



TEMPLATE

1/10 Size



Optional head panel : W420*H400MM

keep important graphic in this line

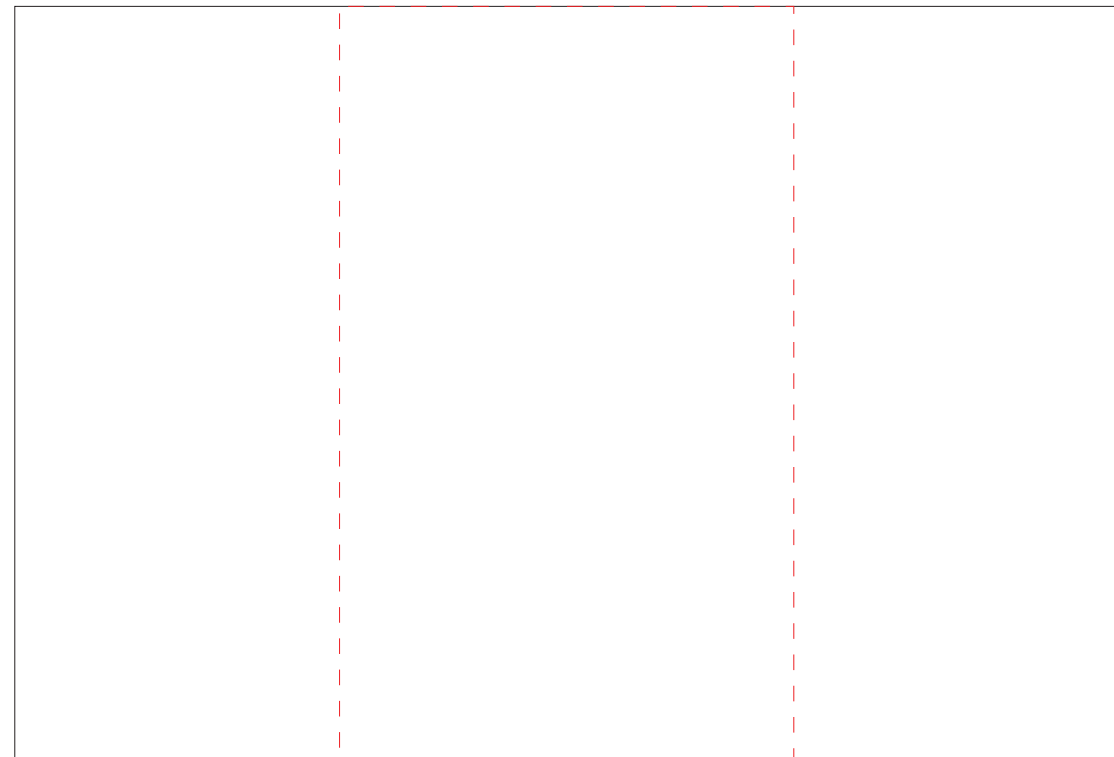


Table printing size : W 1460*H1000mm

keep important graphic in this line